

**StarLite™ 150**

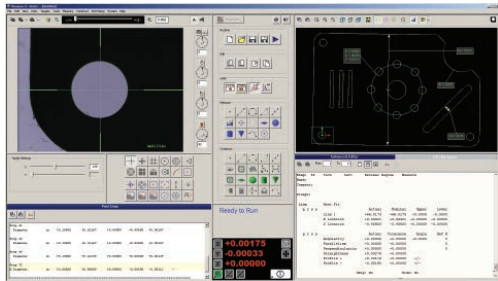
StarLite 150 is compact and reliable video measurement system combining fully automatic measurements with easy to use manual stage motion. StarLite's robust stage, motorized zoom optics and high resolution digital camera provide the accuracy you expect from a high-performance metrology system.

- 3-axis (X, Y, Z) measurement capability
- Digital megapixel color camera coupled with a motorized zoom lens
- Programmable LED backlight and VectorLight™ LED ring light for ultimate lighting flexibility

## Semi-automatic, Compact, Workbench System

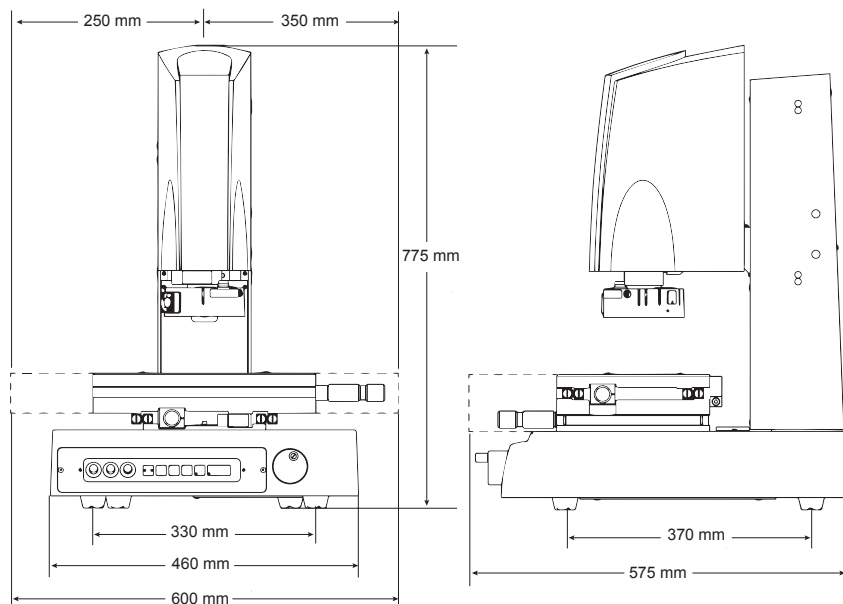


StarLite 150 Measuring Range (mm)			
	X	Y	Z
150	150	75	125



## Measurement Software

Measure-X® is the world's most popular video metrology software. Measure-X makes it easy for StarLite to accurately measure fine features that require multi-step measurement routines. All measurements are fully automatic. Measure-X guides the user to position each feature using the manual stage controls.



System Weight: 50 kg  
Shipping Weight: 155 kg

	Standard		Optional	
<b>X, Y, Z Travel</b>	150 x 75 x 125 mm			
<b>X, Y, Z Scale Resolution</b>	1.0 µm			
<b>Stage Drive System</b>	Manual with coarse and fine X, Y, Z position adjustment knobs			
<b>Max Recommended Stage Load</b>	7 kg			
<b>Working Distance</b>	62 mm (with standard VectorLight)		Up to 133 mm (0.5x lens attachment)	
<b>Imaging Optics</b>	6.5:1, 10 position motorized zoom lens			
<b>Lens Attachments</b>			0.5X, 0.75X, 1.5X, 2.0X	
<b>Field of View</b> <small>*Uses optical and digital zoom</small>	Low Mag	High Mag*	Low Mag (0.5X)	High Mag* (2.0X)
	7.3 mm x 5.5 mm	0.5 mm x 0.4 mm	14.6 mm x 11.0 mm	0.27 mm x 0.20 mm
<b>Metrology Camera</b>	Digital, Megapixel Color Metrology Camera			
<b>Magnification on 24" LCD Monitor</b>	24x to 370x on-screen digital/optical magnification standard with full feature Measure-X layout		12x to 740x on-screen digital/optical magnification with optional add-on lenses and dual monitor user interface	
<b>Illumination</b>	LED VectorLight programmable ring light with 6 rings and 8 sectors LED backlight		Option 1: LED VectorLight SP programmable ring light with 6 rings and 7 sectors, LED backlight, LED square-on surface light Option 2: LED VectorLight SF programmable ring light with 6 rings and 8 sectors, LED backlight, LED square-on surface light (reduced working clearance)	
<b>Controller</b>	QVI® standard system controller with networking and communication ports		Single flat panel LCD monitor, or dual flat panel LCD monitors; keyboard, mouse	
<b>Software</b>	Measure-X		MeasureFit® Plus, Measure-X Offline, CAD interface, SmartProfile®, EVOLVE™ SPC, SmartSCS software for FDA compliant environments	
<b>Miscellaneous Options</b>			Optical accessory kit, manual rotary indexer, NIST traceable calibration artifact, footswitch, dust cover	
<b>Power</b>	100-120 VAC or 200-240 VAC, 50/60 Hz, 1 phase, 250W			
<b>Operating Environment</b>	Temperature 15-30 °C			
<b>Rated Environment</b>	Temperature 18-22 °C, stable to ±1 °C, max rate of change 1 °C / hour, max vertical gradient of 1 °C / meter; 30-80% humidity; vibration <0.001g below 15 Hz			
<b>XY Area Accuracy</b>	$E_2$ : (4.5 + 8L/1000) µm			
<b>Z Linear Accuracy</b>	$E_1$ : (7.0 + 8L/1000) µm			

Accuracy is evaluated with a QVI verification procedure where "L" is measured length in millimeters. Specifications apply within the rated environment. Standard optical specifications apply at the maximum optical magnification of the standard configuration. XY Accuracy applies with an evenly distributed load up to 5 kg in the standard measuring plane. The standard measuring plane is defined as a plane that is within 25 mm of the worktable surface. Depending on load distribution, accuracy at maximum payload may be less than standard.



Confidence. When Results Matter.™

**Optical Gaging Products, a division of Quality Vision International**  
850 Hudson Avenue • Rochester, NY 14621 • USA  
Phone: (585) 544-0400 • (800) 647-4243 • Fax: (585) 544-8092  
info@ogpnet.com  
www.ogpnet.com