

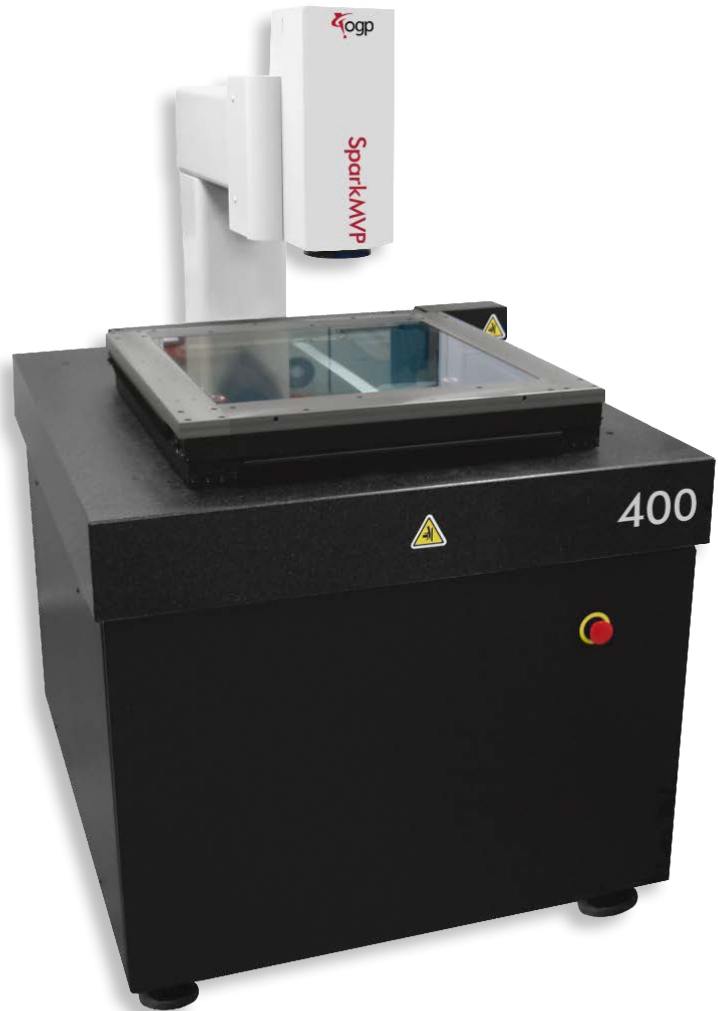


SparkMVP™ 400|600

SparkMVP 400 and 600 are large capacity dimensional measuring systems designed for measurement of small parts or features. An optional extended Z-axis provides added range for larger parts.

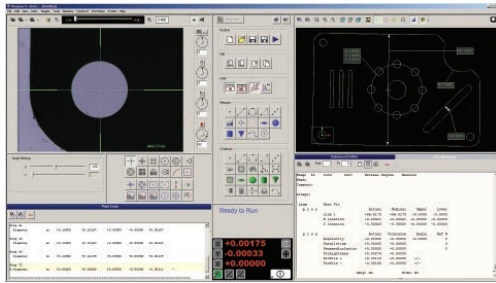
- High resolution fixed lens optical system and digital megapixel metrology camera with 3:1 digital zoom
- Configurable objective lenses and backtube for 1.0x to 10x optical magnification range
- Optional TTL laser, touch probe and grid projector for multisensor versatility
- Optional 300 mm Z-axis for extended measuring volume

High Performance, Large Capacity Measurement System



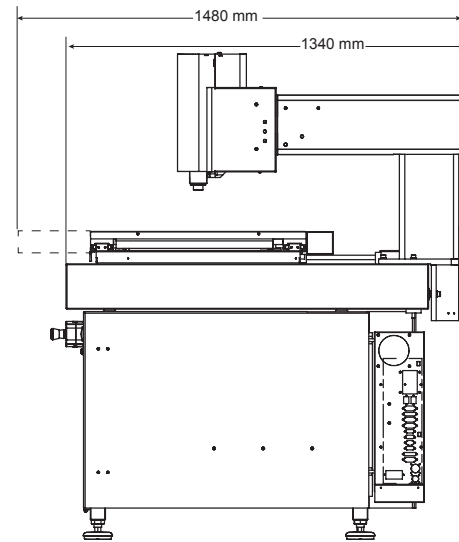
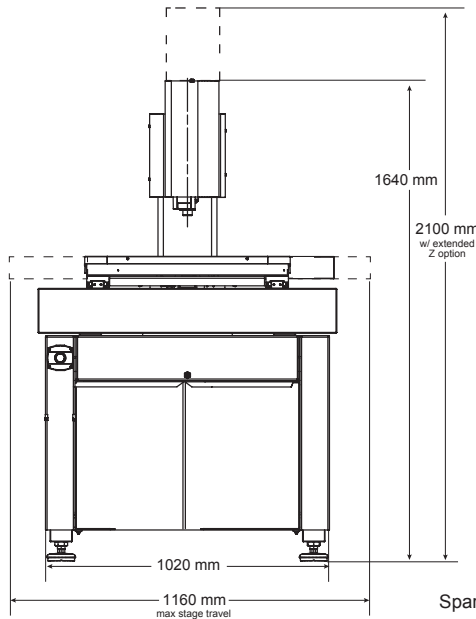
SparkMVP 400 600 Measuring Ranges (mm)				
Models	X	Y	Z	
400	450	450	150	
650	610	450	150	

SparkMVP™ 400|600



Measurement Software

Measure-X® is the world's most popular video metrology software. Measure-X makes it easy for SparkMVP to accurately measure fine features that require multi-step measurement routines, automatically combining autofocus, edge detection, programmable lighting, laser scanning and touch probing.



SparkMVP 400 Model Shown

System Weight: Shipping Weight:
 400 Model - 1,215 kg 400 Model - 1,345 kg
 600 Model - 1,330 kg 600 Model - 1,500 kg

		Standard	Optional	
X, Y, Z Travel	400	450 x 450 x 150 mm	450 x 450 x 300 mm	
	600	610 x 450 x 150 mm		
X, Y, Z Scale Resolution		0.5 µm	0.1 µm	
Stage Drive System		Precision, compound motorized XY stage and linear Z stage with 3-axis joystick control		
Max Recommended Stage Load		30 kg		
Working Distance		34 mm (with standard Conical VectorLight™ and 1.0X lens)	64 mm (with optional Fresnel VectorLight and long working distance 1.0X lens)	
Imaging Optics		Fixed lens optics with factory configurable back tube and field interchangeable front lens options		
Front Lens (Field Interchangeable)	Lens	FOV	Lens	FOV (with standard 1X back tube)
	1.0X	5.7 mm x 4.2 mm	2.5X	2.3 mm x 1.7 mm
			5.0X	1.1 mm x 0.9 mm
Back Tube (Factory Installed)		1X	2X	
Metrology Camera		High Density Megapixel Black & White Metrology Camera with 4:1 Digital Zoom		
Magnification on 24" LCD Monitor		27x to 108x on-screen digital/optical magnification with full feature Measure-X layout	27x to 1000x on-screen digital/optical magnification with optional interchangeable front lenses and full feature Measure-X layout	
Sensor Options			TP20 touch probe and change rack, Through-the-lens (TTL) laser	
Illumination		LED coaxial surface light, LED backlight, Conical VectorLight programmable LED ring light with 5 rings and 8 sectors	Fresnel VectorLight programmable LED ring light with 6 rings and 8 sectors for use with long working distance 1.0X lens	
Controller		QVI® standard system controller with networking and communication ports	Single flat panel LCD monitor, or dual flat panel LCD monitors; keyboard, mouse	
Software		Measure-X	MeasureFit® Plus, SmartReport®, CAD interface, SmartProfile®, EVOLVE™ SPC, SmartSCS software for FDA compliant environments	
Miscellaneous Options			Rotary indexer, digital I/O capability	
Power		100-120 VAC or 200-240 VAC, 50/60 Hz, 1 phase, 1000W		
Operating Environment		Temperature 15-30 °C		
Rated Environment		Temperature 18-22 °C, stable to ±1 °C, max rate of change 1 °C / hour, max vertical gradient of 1 °C / meter; 30-80% humidity; vibration <0.001g below 15 Hz		
XY Area Accuracy		E _x : (3.0 + 8L/1000) µm (SparkMVP 400) E _y : (3.5 + 8L/1000) µm (SparkMVP 600)		
Z Linear Accuracy		E _z : (5.5 + 5L/1000) µm	E _z : (2.0 + 5L/1000) µm (with 5.0X interchangeable front lens)	

Accuracy is evaluated with a QVI verification procedure where "L" is measured length in millimeters. Specifications apply within the rated environment. Standard optical specifications apply at the maximum digital magnification of the standard configuration. XY Accuracy applies with an evenly distributed load up to 5 kg in the standard measuring plane. The standard measuring plane is defined as a plane that is within 25 mm of the worktable surface. Depending on load distribution, accuracy at maximum payload may be less than standard.



Confidence. When Results Matter.™

Optical Gaging Products, a division of Quality Vision International
 850 Hudson Avenue • Rochester, NY 14621 • USA
 Phone: (585) 544-0400 • (800) 647-4243 • Fax: (585) 544-8092
 info@ogpnet.com
 www.ogpnet.com