

SNAP measures complex parts instantly without programming. Simply place the part on the stage and press the GO button.

- Bi-telecentric optics ensure accurate part measurements in shop conditions
- AutoID recognizes any known part in the field of view
- Automatically find and measure any unknown parts in the field of view
- Exclusive Zoom Anywhere™ technology lets you zoom in to measure details anywhere in the viewing area
- SNAP 100 enables fast measurement without fixturing, regardless of part orientation

## Desktop digital measuring machine



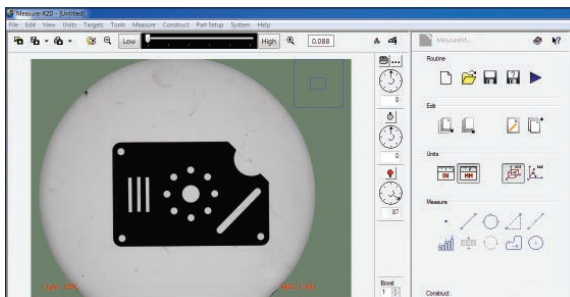
## Measurements Made Simple

SNAP provides a full range of feature measurements with an unlimited number of points - with or without a pre-programmed routine. AutoID and FeatureExtractor™ allow SNAP to accurately identify, orient and measure any part in its field of view.

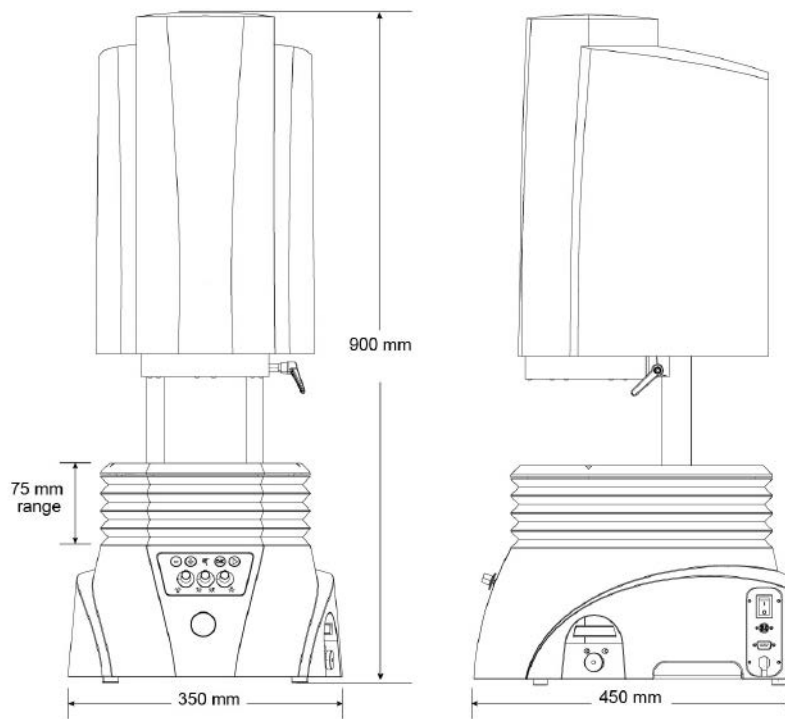
### Choose the mode for your task:

- Run - for pre-programmed routines
- Measure - to automatically measure any part
- Program - to set up a part routine

To measure, just place the part on the stage and press ►



# SNAP™ 100



System Weight: 45 kg

	Standard	Optional
<b>Measuring unit</b>	Rigid, cast aluminum base and nickel plated worktable; 4 kg load capacity, evenly distributed	
<b>Stage</b>	Manual 75 mm Z axis (focus) adjustment with lock	Motorized, programmable 75 mm Z axis (focus) adjustment SNAP Miniature Rotary (SMR) indexer
<b>Optics</b>	Bi-telecentric, single optical magnification	Bi-telecentric, dual optical magnification with 4X high magnification lens
<b>Illumination</b>	Monochromatic LED substage profile light, and programmable 8 sector monochromatic ring light	LED monochromatic coaxial through-the-lens surface light
<b>Metrology camera</b>	QVI High Density Megapixel Metrology Camera	QVI Large Field Megapixel Metrology Camera
<b>Maximum field of view (diagonal)</b>	Single Mag / High Density Camera: 78 mm	Single Mag / Large Field Camera: 100 mm Dual Mag / High Density Camera: Low: 78 mm High: 19.5 mm Dual Mag / Large Field Camera: Low: 100 mm High: 45.0 mm
<b>Depth of field</b>	Single Mag / High Density Camera: 20 mm	Single Mag / Large Field Camera: 50 mm Dual Mag / High Density Camera: Low: 20 mm High: 5 mm Dual Mag / Large Field Camera: Low: 50 mm High: 10 mm
<b>Image processing</b>	SNAP advanced image analysis, 256 level grayscale, with 10:1 - 50:1 sub-pixel resolution	
<b>Controls</b>	GO button, illumination & magnification controls	Controls for motorized Z motion control
<b>System controller</b> <small>*Controller configuration subject to change without notice</small>	SNAP system controller with networking and communication ports	Single flat panel LCD monitor, or dual flat panel LCD monitors; keyboard, mouse
<b>Miscellaneous options</b>		Barcode reader, USB digital I/O capability, USB - Ethernet adapter, dust cover, fixture kit, peripheral support frame, calibration artifact
<b>Rated environment</b>	Temperature 18 °C - 22 °C, stable to ±1 °C; 30-80% humidity; vibration <0.001g below 15 Hz	
<b>Power</b>	100-120 VAC or 200-240 VAC, 50/60 Hz, 1 phase, 160 W	
<b>XY FOV accuracy (E<sub>2</sub>)</b>	<b>Single Magnification Optics</b>	<b>Dual Magnification Optics</b>
	(4.0 + L/50) μm <sup>1,2,3,4,5</sup>	(4.0 + L/50) μm <sup>1,2,3,4,5</sup> (low mag lens)      (2.0 + L/50) μm <sup>1,2,3,4,5</sup> (high mag lens)

1. Where L = Measurement length in mm. All specifications apply to a thermally stable system operated in the rated environment. | 2. Applies to the highest digital zoom level at each optical magnification. | 3. With evenly distributed load ≤ 2.5 kg. | 4. QVI calibration artifact P/N 640113 or 640685 for high density camera; 640554 for large field camera. | 5. Calibration artifacts are described in QVI publication number 790762.



Confidence. When Results Matter.™

**Optical Gaging Products, a division of Quality Vision International**  
 850 Hudson Avenue • Rochester, NY 14621 • USA  
 Phone: (585) 544-0400 • (800) 647-4243 • Fax: (585) 544-8092  
 info@ogpnet.com  
 www.ogpnet.com